

Pursuing the *pulse*

YOUR COMPREHENSIVE PARTNER FROM IDEA TO IMPLANT

Resolution Medical is your vertically integrated partner for prototyping, designing, testing and manufacturing catheters and Implantable Pulse Generators (IPGs)

What Makes Us Unique:



Transparency

Fully open book pricing



Trust

We assign all IP to our Customers



Easy to Work With

No red tape, just hard work



We're Fast

Vertically integrated dedicated product project teams

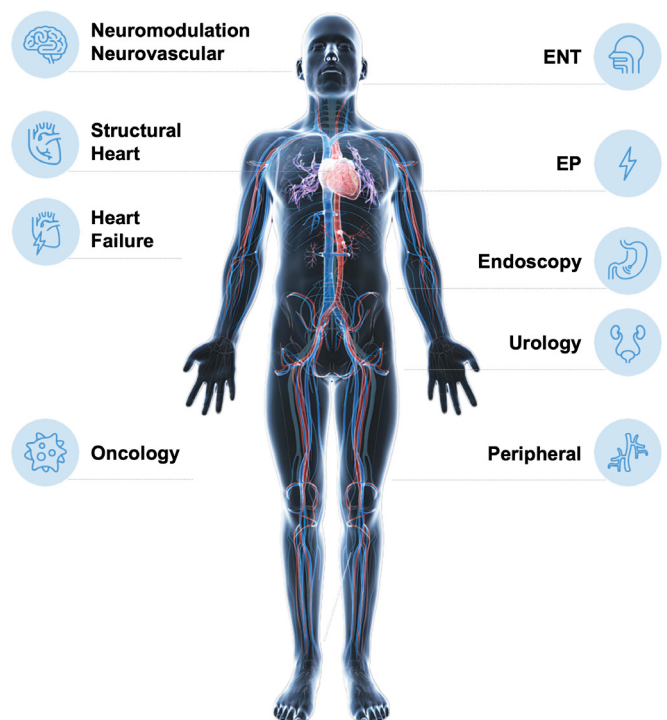


Deep Clinical Engineering Expertise

100+ Engineers

Markets We Serve

- **Neuromodulation**
Pacing, Defib, IPGs, Leads
- **Structural Heart**
Valves, Occluders, Shunts, LAA, Access, Delivery Systems and Stents etc.
- **Electrophysiology**
Mapping, Sensing, Ablation Catheters
- **Cardiology/Vascular**
OCT, IVUS, Closure, Access, Crossing and Thrombectomy
- **Heart Failure**
VADs, Delivery, Driveline, Pumps, Externals
- **Additional Markets**
Urology, ENT, Gastrointestinal



Whether you're looking for a partner for the entire medical device process from concept through production, or a specific one-off service or capability, Resolution Medical can serve as **a true extension of your business.**

Concept Engineering

Prototype designs using off the shelf materials to provide rapid and cost effective early devices.



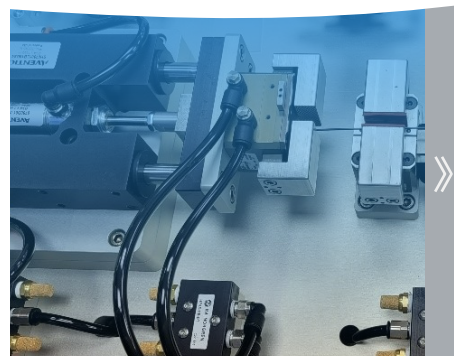
Product Development

Experienced team dedicated to developing new products from concept, through formal design and dev process, including DVT testing.



NPI / Process Development

Our NPI experts seamlessly launch products into production: handling design, manufacturing processes, and compliance. We navigate complexities and guide you to success.



Manufacturing

70,000 sq. ft of innovation and production. Multiple large Class 7 cleanrooms with complex assembly, sterile packaging, labeling and distribution.



Quality Management Systems

Utilize Grand Avenue QMS platform to enable full FDA and regulatory compliance and documentation.



BioSimulation

Tissue models with real life pulsatile simulation to enable visualization of your device to assess & see performance.

